

RhinoTM



"Built Tough"

Stainless Steel Tank Fittings

Installation Instructions

08-27-02

Tools Needed:

Electric or Cordless Drill
 5/8" Drill Bit
 Hole Saw
 Marking Pen
 2 Small C-Clamps
 3/4" Deep Socket
 Torque Wrench

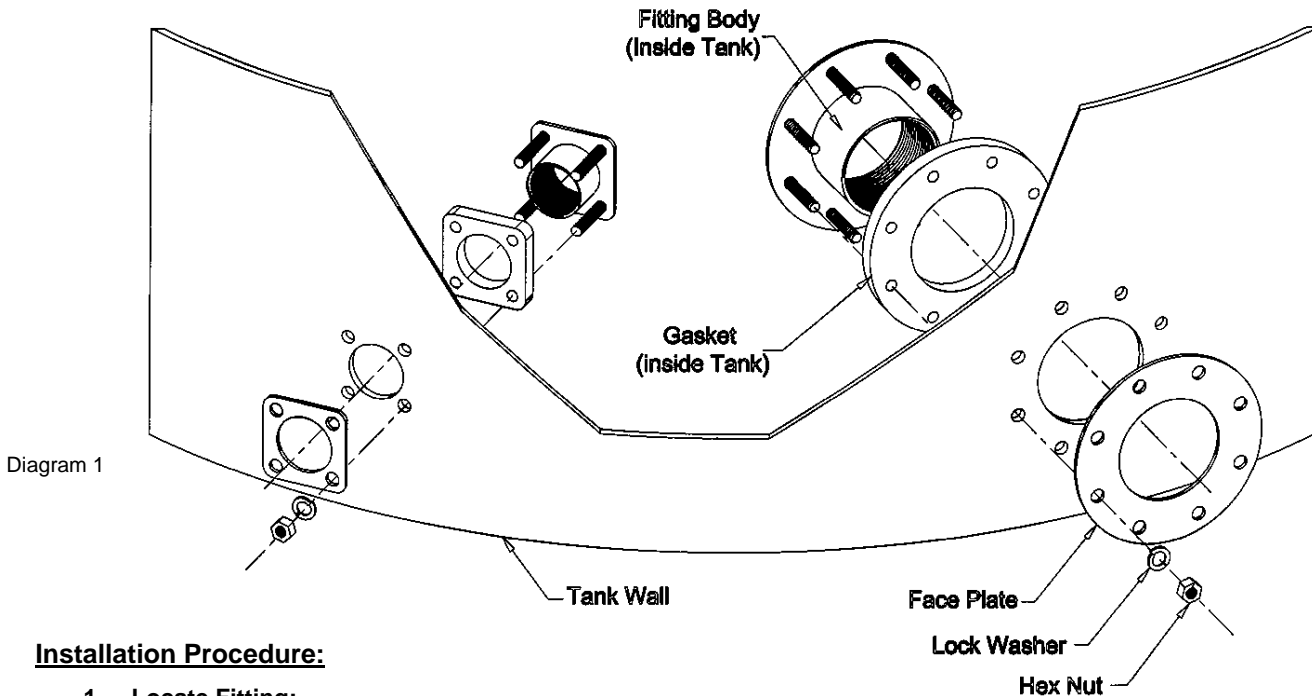


Diagram 1

Installation Procedure:

1. Locate Fitting:

When determining fitting location, keep sufficient distance away from any ridges, bumps, corners, tight radiuses, or appurtenances that might interfere with fitting seating properly. Entire surface of fitting gasket must not be obstructed from seating properly on tank wall.

2. Cut Hole:

Using appropriate size hole saw or scroll saw, cut a hole which is 1/16" larger in diameter than outside diameter of fitting body. See diagram 2.

3. Mark Stud Holes:

Using a small C-clamp, (2 clamps on larger fittings) center fitting face plate over the hole you just cut and clamp flush against tank wall. Using a marking pen, accurately mark each stud hole on tank surface.

4. Drill Stud Holes:

Unclamp and remove face plate and carefully drill each hole using a 5/8" drill bit.

5. Install Tank Fitting:

From inside tank, install fitting body (with gasket) through tank wall making sure gasket is seated properly.

6. Tighten Fitting:

From outside tank, slip face plate over fitting studs and liberally apply "Anti-Seize" to each stud. Failure to use supplied anti-seize will void warranty. Thread supplied nuts and lock washers onto each stud. Using torque wrench, gradually and incrementally tighten each nut in a crossing pattern to a maximum of 25 ft. lbs. of torque. Gasket will compress and seal properly @ 15-20 ft. lbs. of torque. Do not use pneumatic air wrench to tighten.

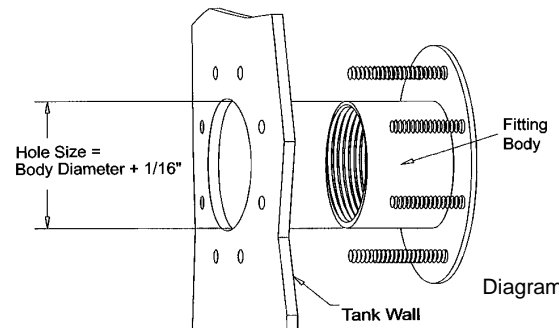


Diagram 2

CAUTION:

Failure to comply with these instructions may result in damage to the gasket, tank and/or fitting and will void fitting warranty.